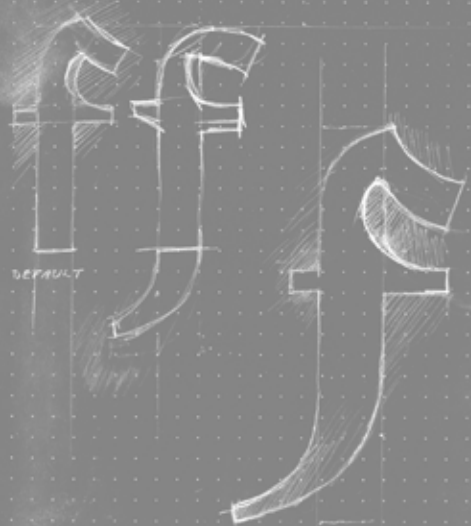
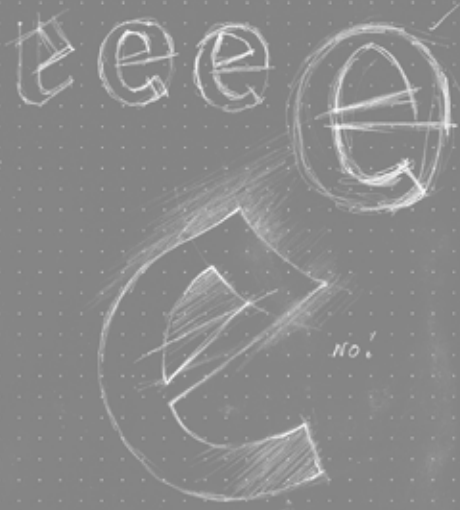


NEW FONT  
RELEASE  
CIRCA 2020

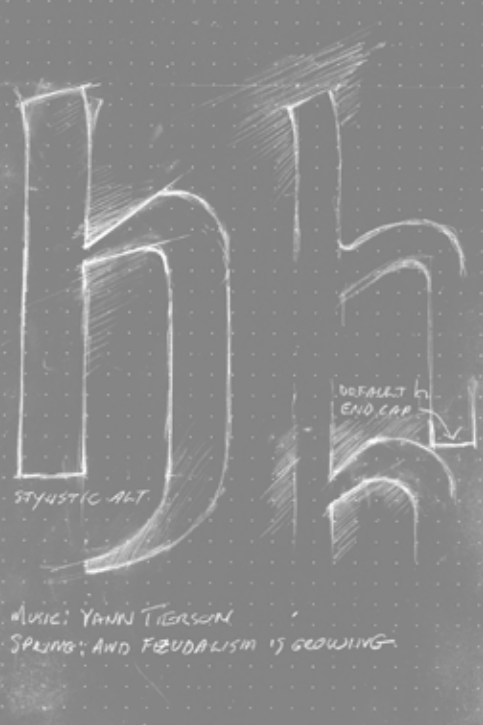


NeoFeudalism.otf

Designed, drawn  
& engineered by Jan Erasmus



**A new Narrow Humanist Sans font that looks as if it was blown backwards into the future**



MUSIC: YANNI TIERSON  
SPRING: AND FEUDALISM IS GROWING.

NEW FONT RELEASE CIRCA 2020

## NeoFeudalism.otf

Experiencing a talk by Max Keiser  
(the host of The Keiser Report, a financial  
program broadcast on the media channel  
RT that features heterodox economics)  
he explained where he thinks the  
economy is heading. 'Neo-Feudalism' was  
his opening statement and this caught  
my attention!

He further stated: 'The Technocrats are now  
busy destroying the middle class through

stripping them bare of any  
savings and property with the  
lock-down pandemic laws'.

Stay at home by Govern-  
ment order (or get arrested  
for working in an office with  
others!) and earn noth-  
ing until you are evicted or  
your property is confiscated  
through foreclosure rules  
from the landlord. Their idea

is to strip everybody of all property—period.  
Remove all the pieces off the Monopoly board  
so that there is nothing in which to invest.  
This is how Feudalism arrived so rapidly in the  
first world, which I never ever expected. Who  
would believe that this could happen in the  
richest countries in the world?

Wikipedia states:

‘Neofeudalism’ is a theorized contemporary rebirth of policies of governance, economy, and public life reminiscent of those present in many feudal societies, such as unequal rights and legal protections for common people and for nobility.

The concept of “neofeudalism” may focus on economics. Among the issues claimed to be associated with the idea of neofeudalism in contemporary society are class stratification, globalization, neoconservative foreign policy, mass immigration/illegal immigration, open borders policies, multinational corporations, and “neo-corporatism”.

FGHIJKLMN abcdefghijk  
TUVWXYZÀÁlmnopqrst  
ghijklmnopqr;vwxyz

ABCDEFGHIJKLMNO  
PQRSTUVWXYZ abcdefgh  
ijklmnopqrstuvwxyz 123

I decided to design a font which depicts the period towards which we are heading.

A narrow humanist sans serif font developed through a synthesis with black letter and a Benton ‘narrow style sans’. You can clearly see the black letter DNA in the silhouette of this font used for this booklet. You might ask yourself, “why these two fonts?”. Black letter and a narrow sans serif, an unlikely pairing, which is exactly why these two fonts are ironically perfect. Together in their differences, they create contrast and form, some sort of opposites and dialogue in the font. Together they brandish deconstruction and thus expose and highlight the meaning behind the font—the chaos of today’s world.

Black letter as used in The Guttenberg Bible, will always remind me of feudalism during the Dark Ages and sans serif will go down as the most important font style used to promoted excessive consumerism in the past few decades. Just as the Dark Ages came to an end, I have no doubt that consumerism has too.

Iaan Bekker, a typography specialist, remarks that it is interesting that both font styles are German of origin. This coincidence is interesting but not part of my criteria for a selection. It is, however, a remarkable concurrence of circumstances with apparent causal connection – perhaps more unintended parallelism than coincidence. My ultimate font choice was based on the leading fonts of the two periods in time but through discussion and reflection have melded into perfectly opposing synchronicity.

### **Apple System Requirements**

OpenType CFF (PostScript outlines) and TTF (TrueType outlines): Mac OS 8.6, Mac OS X, or higher.  
Webfont: NeoFeudalism-Bold font-face self hosting.

### **Windows System Requirements**

OpenType CFF (PostScript outlines) and TTF (TrueType outlines)  
Microsoft Windows 8 & 7, Vista, XP, 2000, NT4, ME, 98, or 95  
Webfonts: NeoFeudalism font-face self hosting.

### **OpenType Features includes**

Kerning, Ligatures, Discretionary Ligatures, Fractions and Ordinals. The font has a complete set of default and some Stylistic Alternatives that can be used with your glyph table and advanced open type features.

### **Basic License & Prices**

For font users with up to 1-5 CPUs at one location.  
Single font: US\$30.00, ZAR400 EXCL VAT  
Web fonts: US\$30.00, ZAR400 EXCL VAT  
Mobile 1 App: US\$30.00, ZAR400 EXCL VAT  
There are Volume and full family discounts of 25%.

[Capitals] ABCDEFGHIJKLMNOPQ  
 RSTUVWXYZ ÂÁÀÃÄÅÇ  
 ÊËÈÉÍÎÏİŁŃÓÔÒÖÕØÚÛ  
 ÜÙŠĐÝŸŽƆ

[Lowercase] abcdefghijklmnopqrstu  
 vwxyz áàâãäåçèéêëïîï  
 ñóòôöõøúùûüšđýÿž Ɔłđ

[Stylistic alternate letters] afhk

[Standard Ligatures] ffi, ffl, ffb, ffk, ffj, fi, fl, fb, fk, ff,  
 fj, fi

[Discretionary Ligatures] Ææ, Œœ, ct, st, ft, fft, fh, ffh, ß

[Proportional Lining Numbers and currency] 1234567890 € \$ ç £ ¥ f ¢

[Ordinals] a o

[Math symbols & fractions] + ± × ÷ = < > ¬ | ¡ μ /  
 1 2 3 1/4 1/2 3/4 % ‰

[Punctuation & marks] \_ - — ° ı " ' “ ” < > « » .,:;…,,

[Accents Legal + sods] ! ; ? ; ^ & ( ) [ ] { } \ / \* † ‡ § ¶ • @  
 © ® ™ # ~  
 \ . / ^ v ~ . o ~ "







